



COMPLETE DOOR SYSTEMS  
**DOORBLOCK**  
by  **INDUPANEL**





INDUPANEL keeps investing in new designs, research and development, and new technologies to offer the ultimate solutions for such an important feature as like the entrance door of your home.

A front door defines the house personality, a distinctive element full of symbolism, a state of the art.

DOORBLOCK is a high-end product, consequence of our experience and evolution, defining an exclusive and personal choice.

**At entrance doors, INDUPANEL goes further.**

**DOORBLOCK** is a complete door system developed by **INDUPANEL**, integrating both the panel **door** (in a wide range of designs, dimensions and finishes), such as **frames** (one or two sidelights, or upper side may be optionally added), and all kinds of **accessories** (knobs, lever handles and bar handles, both standard and integrated), security **locks**, visible or hidden **hinges** and the latest in home **automation systems** (opening by fingerprint or mobile application, removing architectural barriers and facilitating access for people with reduced mobility).

Everything is fabricated using top quality materials to ensure the safety and durability of the final product, looking for the customer's maximum satisfaction.

The high thermal performance of our different cores provides an insulation and energy savings that make this system compliant with Passivhaus standards.



**CORE:** - POLYSTYRENE

**FINISHES:** - RAL POWDER PAINT  
- WOODGRAIN  
- DECORATIVE FOIL



**DOORBLOCK**  
by **INDUPANEL**

**ÚNICA** is **INDUPANEL'S** most special collection. Inspired by a selection of large constellations whose names come from ancient Greek and Roman mythologies, the **ÚNICA** model's collection gathers the beauty and uniqueness of the stars and aim to somehow convey an extraordinary story full of strength and splendour.

Beyond the myths, fantastic beings, divine fighting's... the objective is achieving a different perception of the front door, seeking a conceptual transcendence.

With sets of reliefs, metal-imitating resins, and ad hoc pull handles, these models combine innovation, aesthetics and their own personality.

EVERY TEXTURED DOOR IN THE **ÚNICA** COLLECTION IS MADE IN A ARTISANAL WAY AND PRESENTS A HANDMADE FINISH, SO NO TWO ARE EXACTLY THE SAME, RESULTING IN A UNIQUE AND EXCLUSIVE PIECE.

Enter a new galaxy of front doors.



ÚNICA

ALYA



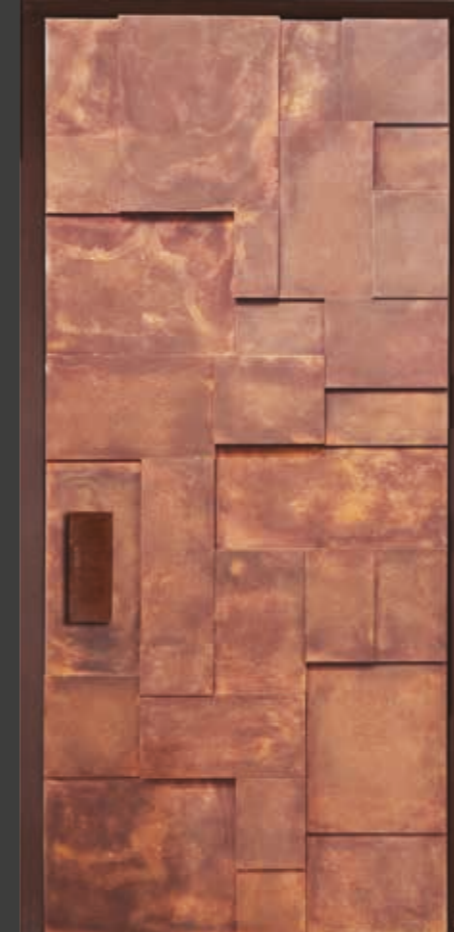
ANDRÓMEDA



ANTARES



AQUILA



ATRIA



CASIOPEA



CRUX



DRACO



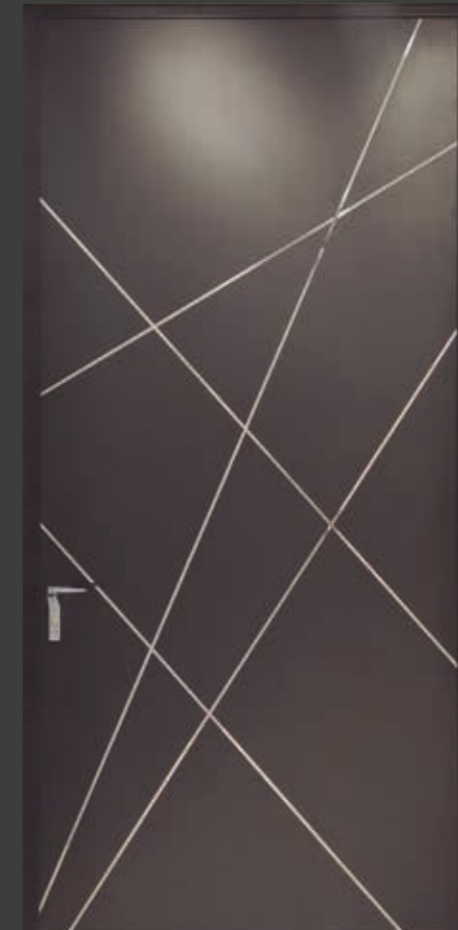
ERÍDANO



FÉNIX

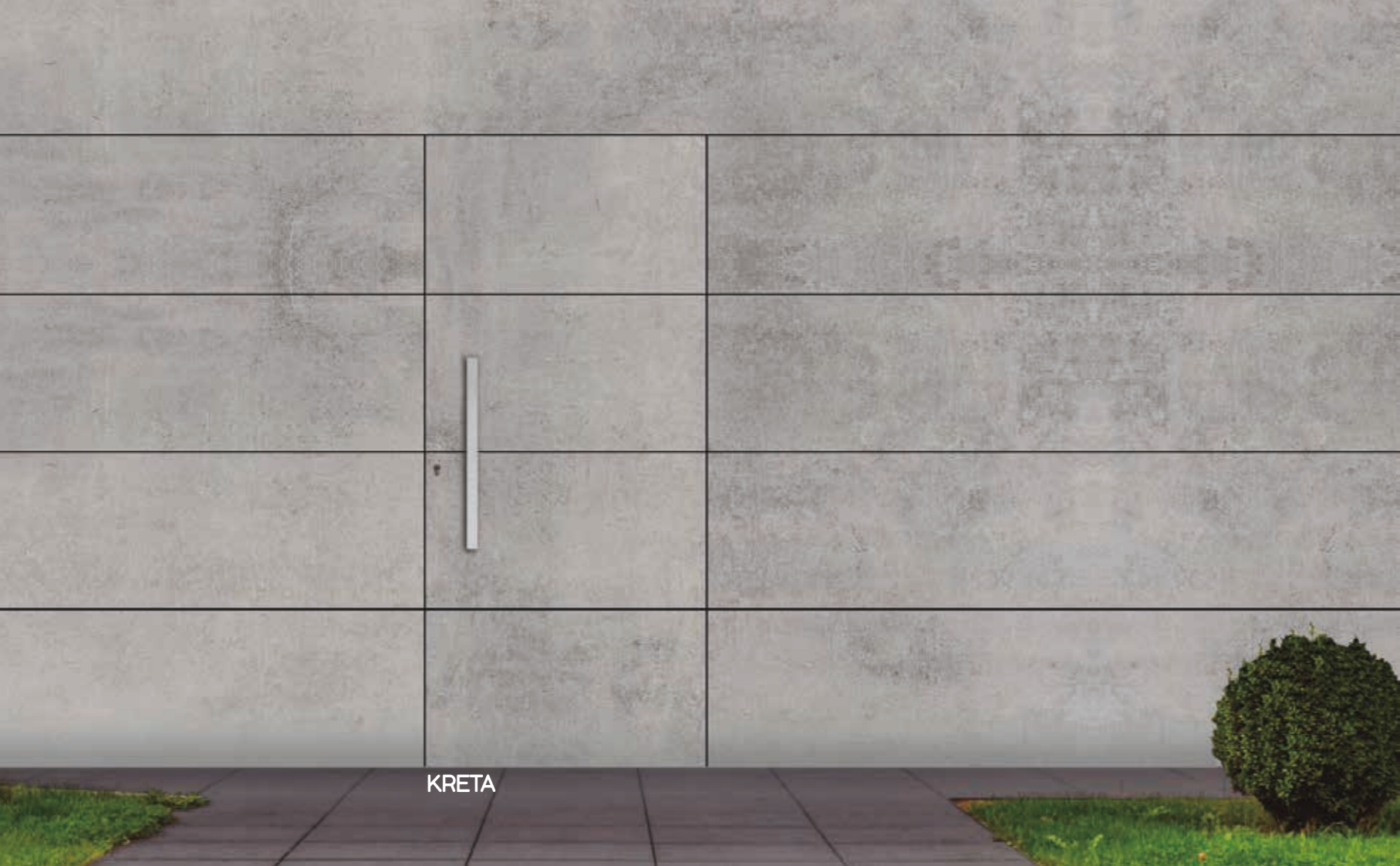


FORNAX GLACIAR



MAIA





KRETA



LAURENT

*INDUPANEL* incorporates the latest design trends for industrial or minimalist styles, by using *DEKTON*, a surface with high resistance to UV rays and high temperatures, ice, abrasion, stains and scratches.

A wide variety of surprising colors and textures, which allow you to achieve great versatility for your project, unleashing creativity and adapting to the space you inhabit. A range of finishes with which you will achieve an incomparable aesthetic and a surprising result.



ARGA



AURA15



KELYA



LAOS



TRILIUM



REM

MODELS



**BASIC**  
RAL 9016  
Acc MA 10



**BASIC**  
RAL 9016  
Concealed handle



**3LINE**  
RAL 9016  
Acc MA 10



**3LINE**  
RAL 9016  
Concealed handle



**3LINE - GLACIAR**  
RAL 9016  
Concealed handle



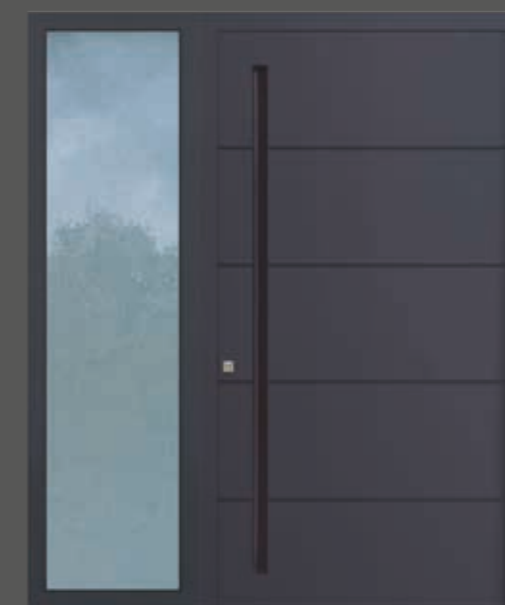
**FULLY GLAZED**  
RAL 7016  
Acc MA 10



**IP-3**  
RAL 7016  
Acc MA 10



**4LINE**  
RAL 7016  
Acc MA 10



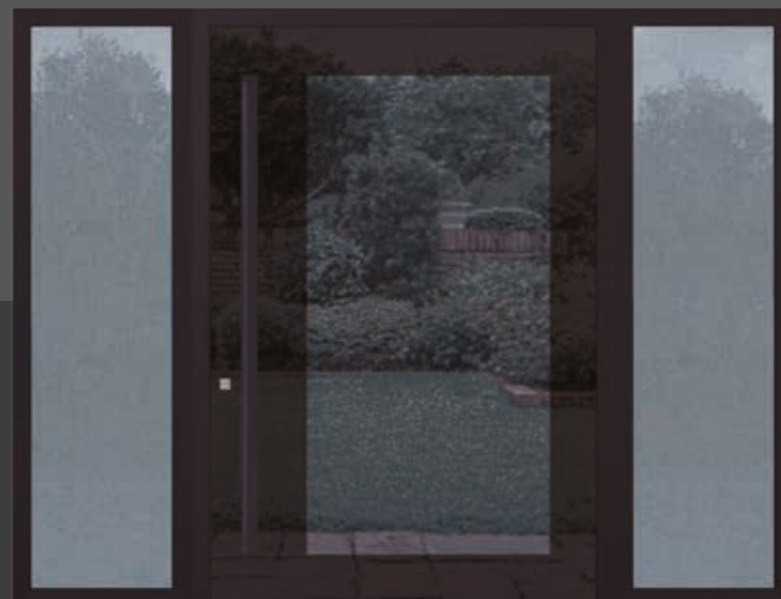
**4LINE**  
RAL 7016  
Concealed handle



**4LINE - GLACIAR**  
RAL 7016  
Concealed handle



**LACOBEL**  
RAL 9005  
Concealed handle



**LACOBEL / GLASS**  
RAL 9005  
Concealed handle



**5LINE**  
RAL 9005  
Acc MA 10



**5LINE**  
RAL 9005  
Concealed handle



**5LINE - GLACIAR**  
RAL 7016  
Concealed handle



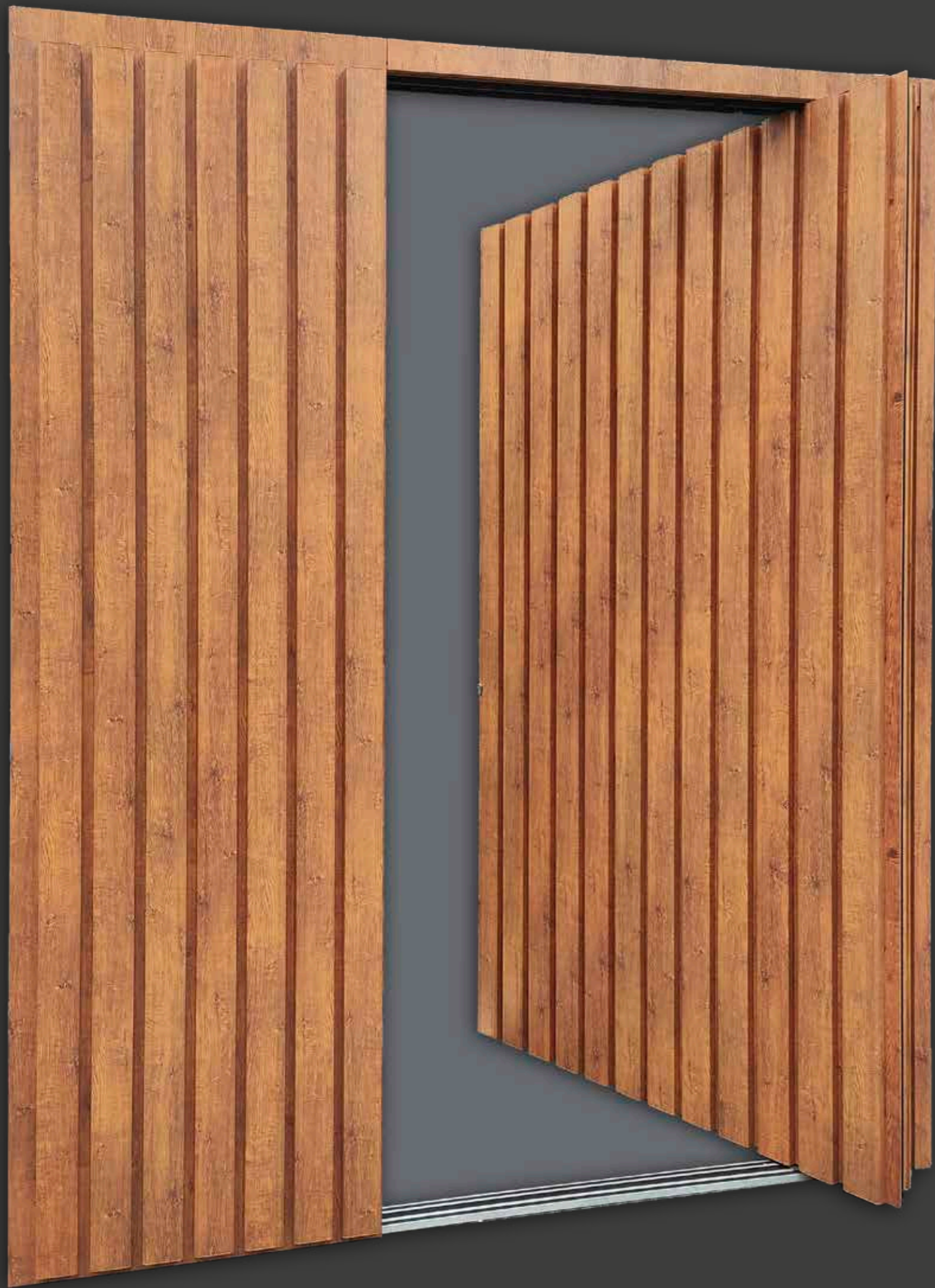
**ALYA**  
Colour: Golden oak  
Accessory: Concealed handle RAL 9005  
Details: Vertical square trims 50x40 mm

This new design is influenced by the Nordic style, identified by its vertical square trims, that give it a surprising 3D shape and solid appearance.

The versatility of the width and depth of these vertical trims, together with the combination of the different skins and trim finishes, provide it a wide variety of results.



**ALYA**  
Colour: Foil 4703001 and RAL 9010  
Accessory: Concealed handle  
Details: Vertical square trims 50x40 mm  
Fingerprint scanner



The configuration of this model is available with a concealed handle or a standard bar handle, and even a disguised solution by having on slightly projected square trim with a side milled recessed handle.

**PIVOT DOOR**  
**ALYA**  
Colour: Golden oak  
Details: Vertical square trims 80x20 mm





**ATRIA**  
Colour: Foil 4703001  
Accessory: Atria BROWN OXIDE

With its own integrated handle in the door skin, this new model offers multiple combinations of finishes, achieving a wide variety of results.

This pull handle is fully recessed into the door surface and has a flush metal piece which is used to pull, either from above or below.



**ATRIA**  
Colour: Foil 4703004  
Accessory: Atria RAL 9005



Another integrated handle is this MAIA model. It is recessed in the door panel, positioned horizontally, with enough space for an ergonomic grip.

**MAIA**  
Colour: Chestnut  
Accessory: Maia RAL 9005





An industrial finish imitating cement, with irregular textures, characterizes this new design.

Minimalist and sober, in neutral tones, and with a robust aesthetic, this door provides a touch of authenticity at your entrance.





**FORNAX**  
Colour: RAL 7021  
Accessory: MA II  
Details: Grooves



**FORNAX GLACIAR**  
Colour: RAL 9011  
Details: Stainless steel



**PIVOT DOOR SYSTEM**

**PIVOT DOOR  
4LINE**

Colour: Golden oak  
Details: 80 mm thickness profile



**PIVOT DOOR  
ATRIA**

Colour: Film Shogun  
Accessory: Atria RAL 7022  
Details: Fingerprint scanner



**DEKTON LAOS**  
Colour: RAL 7016  
Accessory: MA 13

## ÚNICA



**ANDRÓMEDA**  
Colour: Foil 1660857 Sahara Cement  
Accessory: Concealed handle  
Details: 3D piece  
LED lighting



**CASIOPEA**  
Colour: Foil 1540925  
Sahara Oxide  
Accessory: Casiopea

Majestic design  
with a finish that  
simulates oxide effect,  
with the pull **handle**  
as the undisputed  
protagonist.

Its large size covers  
a wide part of the  
door, and its slightly  
curved shape  
provides dynamism  
and ergonomics for a  
perfect handling.





## ERIDANO

Colour: Foil 20057004 Desert Oak  
3D piece: Anthracite grey  
Details: Stainless steel straps

With the contrast as a purpose, this piece with organic shapes inspired by the nature, is added to create a three-dimensional experience and unique sensations to the touch.







**AQUILA**  
Colour: Oxide resin  
Accessory: UNICA 10  
Details: Three-dimensional surface

Set consisting of overlapping pieces of different sizes and depths, with rough texture and oxide imitation finish, resulting in a powerful and eye-catching visual style.





**DRACO**

Unique design  
made of resin,  
rough textured in a  
geometric design  
with the handle  
and aged gold  
finished



**FÉNIX**

Three-dimensional  
artwork captured on a  
door, creating an exclusive  
result, finished in silver





#### ANTARES

Made of resin, with a smooth textured part and another rough textured with a spatula effect. Finished in bronze and handle covered with python leather texture



#### LACOBEL

A spectacular finish is achieved by this lacquered glass, with a uniform shine that provides great luminosity and elegance



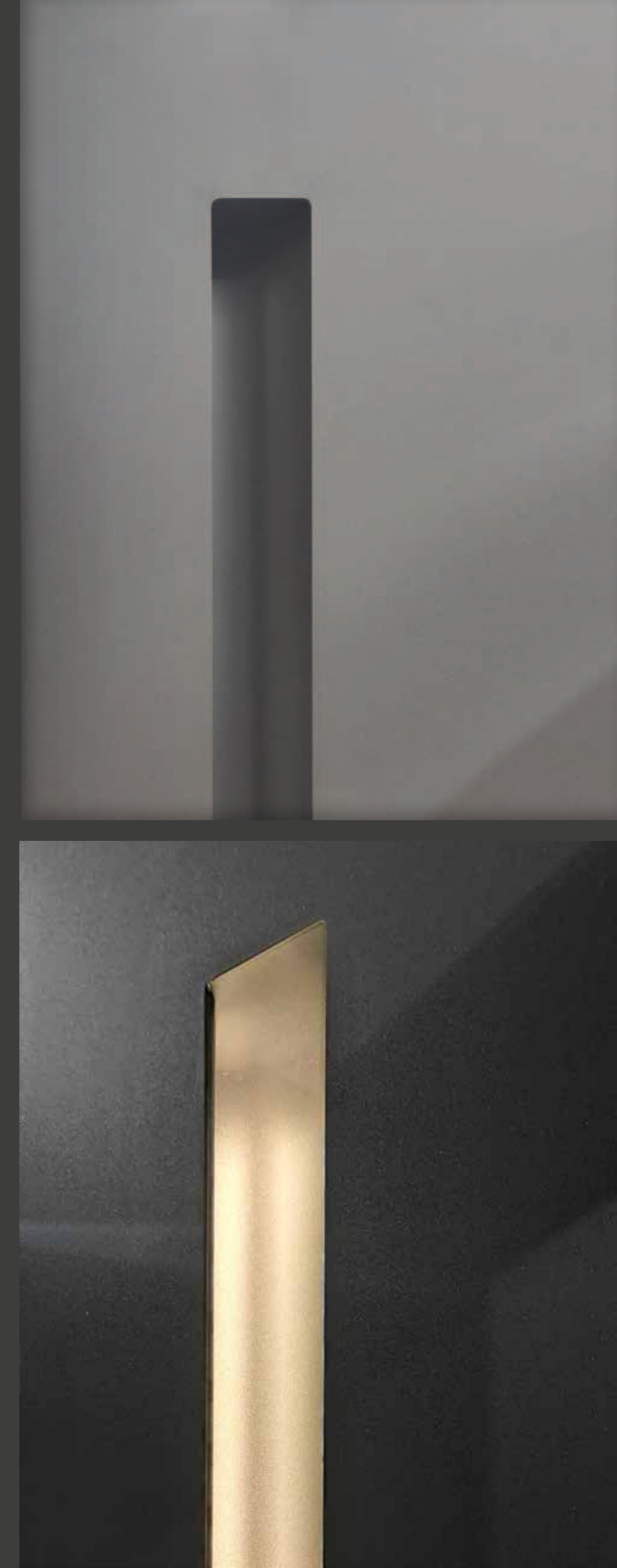


## INNOVATION

Opening system with a **concealed handle**, longitudinally drawn (parallel to the edge of the panel), with an ergonomic opening for a comfortable inner hand grip, giving a clean surface to the door appearance and avoiding any overlapping elements.

This system also allows the incorporation of a LED lighting, a flexible strap that perfectly fits inside the handle and gives a dim light, providing a brilliant result to the door overall assembly.

The size and position of this handle is totally customizable and adaptable to the design of each door, either in the same panel finish or a different one to get a contrast.



**4LINE**  
Colour: RAL 7016  
Accessory: Concealed handle  
Details: Bluetooth opening



**PIVOT DOOR  
NATURA 5**  
Colour: RAL Oxide  
Details: Natural stone

## PIVOT DOOR SYSTEM PIVOT80

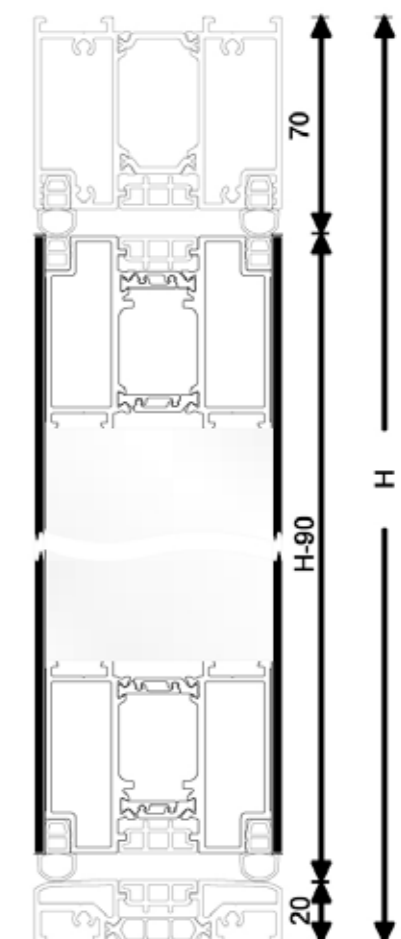
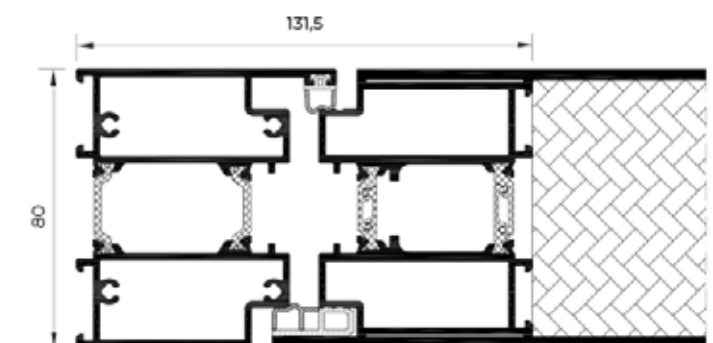
PIVOT DOOR SYSTEM, BONDED ON BOTH SIDES

All pivot doors come with the following basic features:

- 80 mm thickness profile
- 80 mm thickness panel
- 25 mm THICKNESS ALUMINIUM SHEET
- FLUSH PANEL WITH FRAMES BOTH SIDES
- 3 POINTS LOCK
- Glass thickness for sidelights: 32 mm  
(Consult other values)
- Core EPS ( $d=30 \text{ kg/m}^3$ )
- Maximum door height: 3.000 mm
- Maximum door width: 2.100 mm
- Aluminium frame and panel in powder paint finish
- Thermal seal with shear-free insulating profile  
(page 45)
- Safety cylinder
- Low threshold in between the side frames
- EPDM joints
- Lever handle
- Air permeability: CLASS 4
- Watertightness: CLASS 5A
- Wind resistance: CLASS C5

Optional extras:

- Motorised lock, with different types of electronic openings available:  
fingerprint, bluetooth, code... (page 49)
- Handle:  
concealed (page 38), from catalogue (page 53),  
customized...
- High safety cylinder (page 55)
- Thumbturn (page 55)
- Hidden door closer (page 57)
- Motorised opening (page 57)
- Electronic or digital wireless spyhole (page 57)
- Sidelight:  
glazed, paneled, bonded...





**AVPLUS 9**  
 Colour: RAL 9005  
 Glass type: Mat  
 Accessory: MA 10  
 Details: Stainless steel

## DOORBLOCK SYSTEM

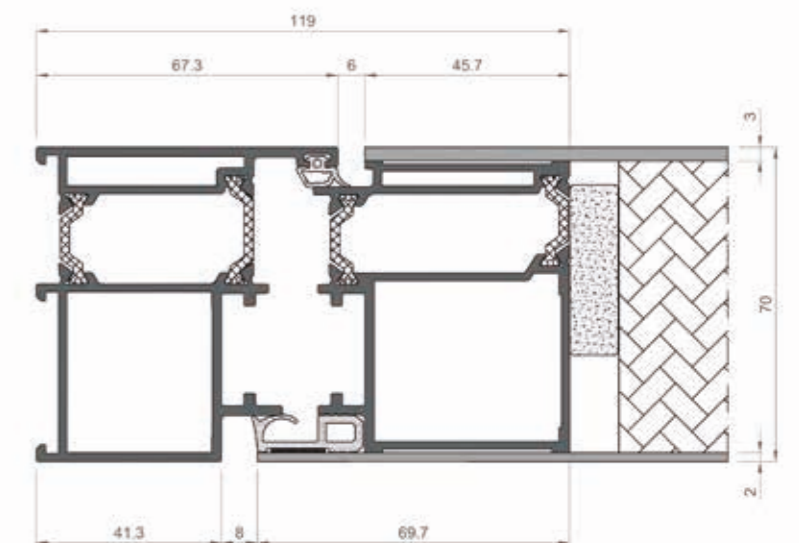
### COMPLETE BONDED DOOR SYSTEM ON BOTH SIDES

All DOORBLOCK doors come with the following basic features:

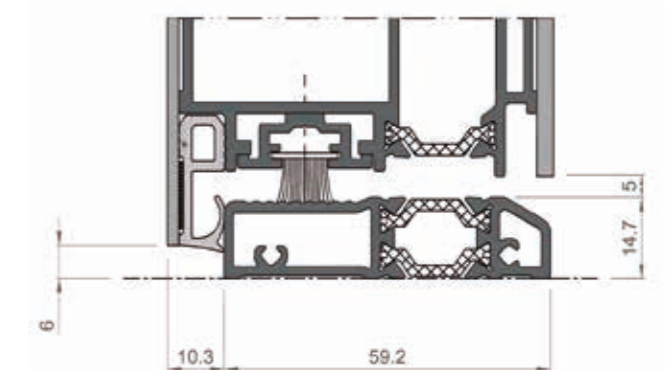
- 70 / 80 mm thickness profile
- 70 / 80 mm thickness panel
- 2'5 mm THICKNESS ALUMINIUM SHEET
- FLUSH PANEL WITH FRAMES BOTH SIDES
- 3 POINTS LOCK
- VISIBLE HINGES (at least 3, powder painted in the color of your choice, except woodgrain)
- Glass thickness for sidelights: 24 mm and 40 mm (Consult other values)
- Core EPS ( $d=30 \text{ kg/m}^3$ )
- Maximum door height: 3.000 mm with visible hinges  
2.700 mm with hidden hinges
- Maximum door width: 1.800 mm with visible hinges  
1.500 mm with hidden hinges
- Aluminium frame and panel in powder paint finish
- Solid panel or panel with triple laminated glass and double chamber for better insulation
- Thermal seal with shear-free insulating profile (page 45)
- Safety cylinder
- Low threshold in between the side frames
- Lever handle
- Air permeability: CLASS 2
- Watertightness: CLASS 2A
- Wind resistance: CLASS C4
- Impact resistance: CLASE 5 (SOLID)
- Maximum acoustic insulation:  $R_w=28$  (-4; -4) dB (SOLID)  
 $R_w=30$  (-2; -2) dB (GLASS)
- Thermal transmittance:  $U_w=11 \text{ W/m}^2\text{K}$  (SOLID)  
 $U_w=1'6 \text{ W/m}^2\text{K}$  (GLASS)

### Optional extras:

- Motorized lock, with different types of electronic opening available: fingerprint, bluetooth, code... (page 49)
- Handle: concealed (page 38), from catalogue (page 53), customized...
- Hidden hinges (at least 3) (page 54)
- High safety cylinder (page 55)
- Thumbturn (page 55)
- Hidden anti-lever system (page 55)
- Hidden door closer (page 57)
- Motorised opening (page 57)
- Electronic or digital wireless spyhole (page 57)
- Double door
- Sidelight: glazed, paneled, bonded...



DOOR THRESHOLD:





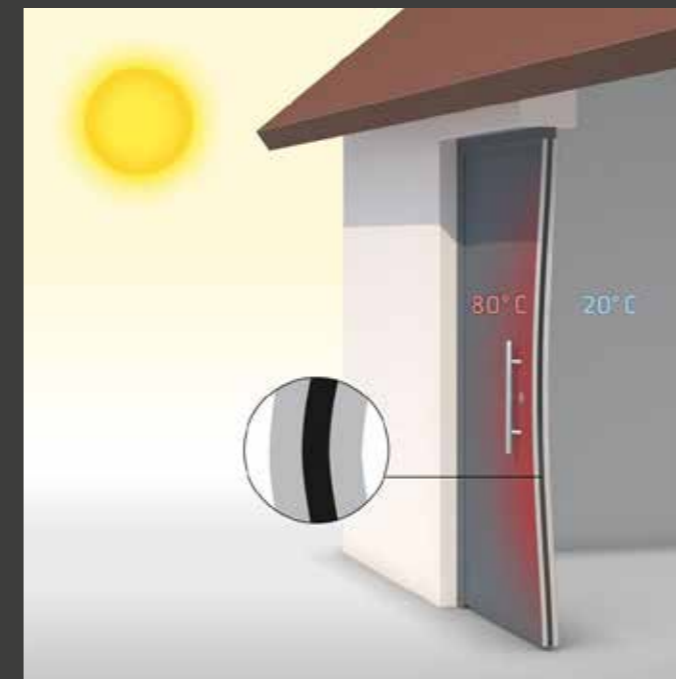
**4LINE GLACIAR**  
 Colour: RAL 7016  
 Details: Stainless steel  
 Accessory: MA 13

## SHEAR-FREE INSULATING PROFILE

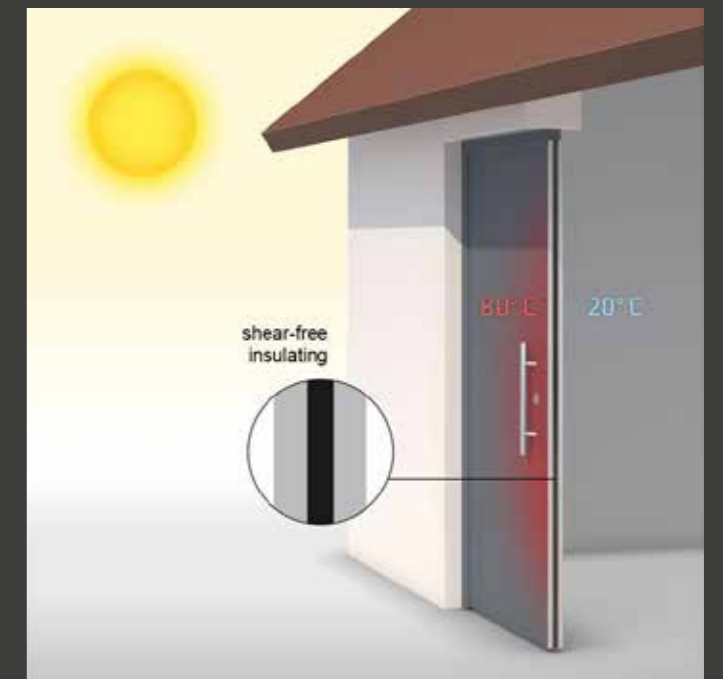
Minimizes the longitudinal expansion produced by the outside-inside temperature difference

This polyamide keeps the door in perfect shape even when there are extreme differences between the external and internal temperature. It consists of two intermeshing parts which, with temperature-related, differing linear expansion of the inner and outer shells, the two parts move against one another.

This generates a moveable, corrective insulating zone which minimises the bi-temperature effect and reduces deformation effectively.



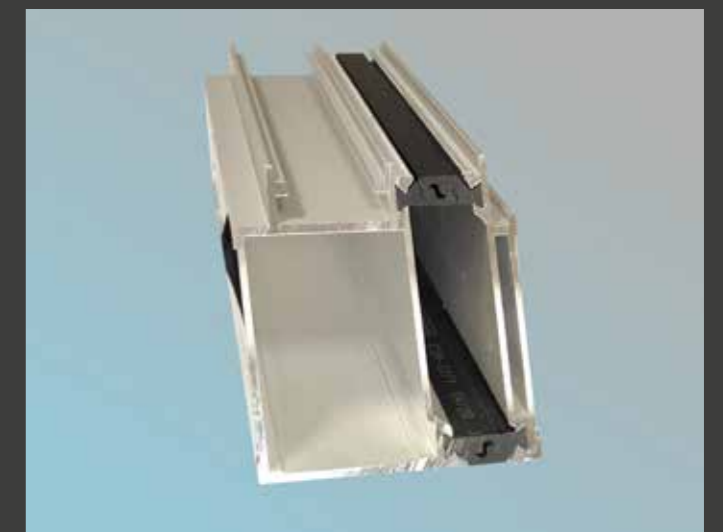
In an aluminium assembly with a conventional insulating profile, the large temperature difference causes the door to become deformed.



When the shear-free insulating profile is used, the differing linear expansion values of the inner and outer shells are evened out effectively.

### BENEFITS:

- No shear: minimization of the bi-temperature effect compared to flexible and rigid profiles to shear
- Minimum elastic shear stiffness  $c$  and low shear strength  $T$
- Optimized geometry for high transverse tensile strength  $Q$
- Can be assembled and coated as a traditional insulating profile





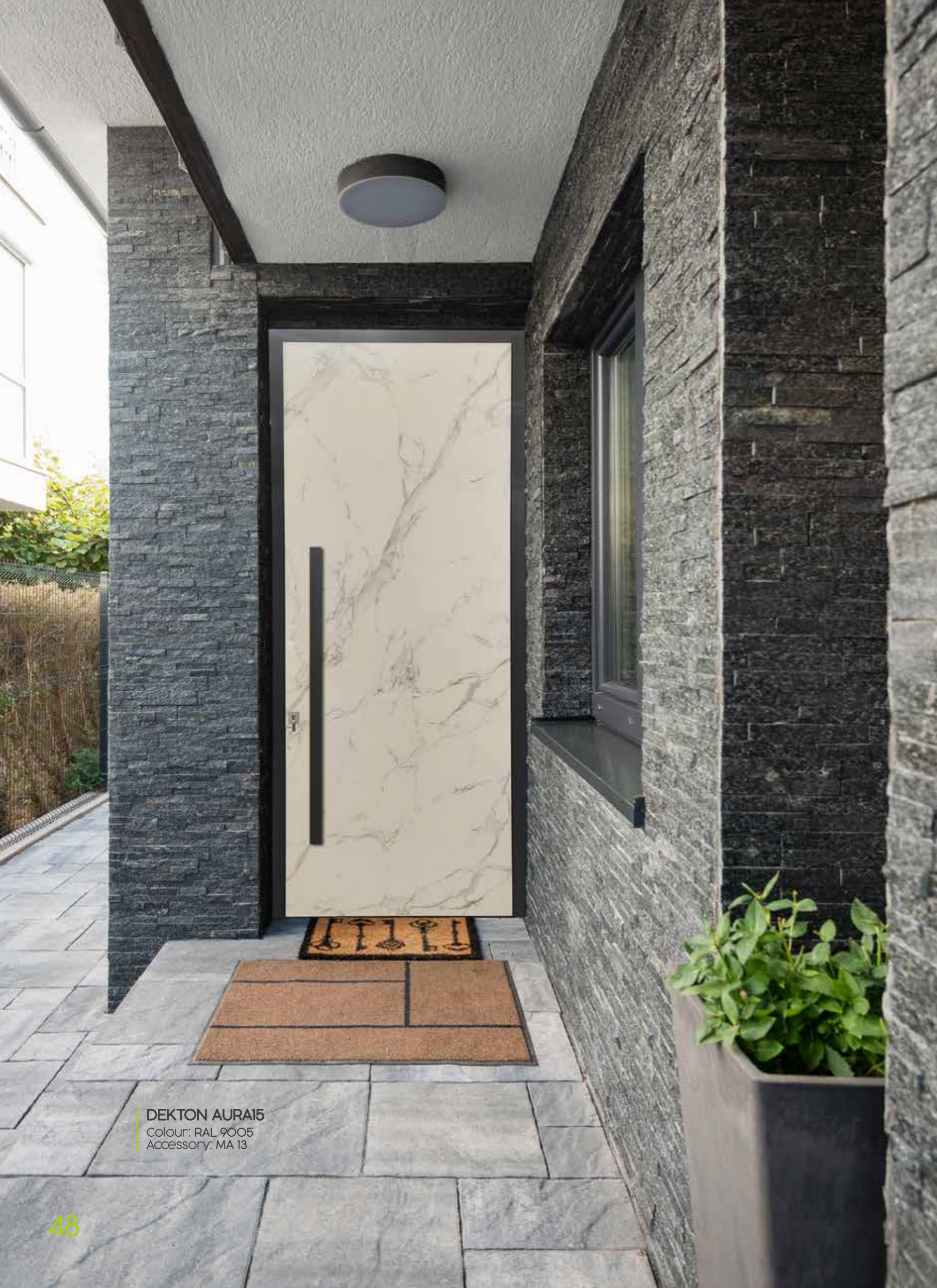
**7LINE**  
 Colour: Foil 20057005 Montain Oak  
 Accessory: MA 13

- ① ALUMINIUM PANEL, 70 OR 80 mm THICKNESS FRAMES, BONDED ON BOTH SIDES, WITH 2'5 mm THICKNESS SHEET
- ② ALUMINIUM FRAME WITH THERMAL SEAL AND SHEAR-FREE INSULATING PROFILE
- ③ CONCEALED HANDLE AND INTERIOR/ EXTERIOR ACCESSORIES (LEVER HANDLES AND BAR HANDLES)
- ④ MULTIPOINT SECURITY LOCK
- ⑤ AUTOMATIC OPENING SYSTEMS (FINGERPRINT, BLUETOOTH...)
- ⑥ DOOR LOW THRESHOLD
- ⑦ TRIPLE LAMINATED GLASS AND DOUBLE CHAMBER
- ⑧ VISIBLE OR HIDDEN HINGES
- ⑨ SAFETY CYLINDER
- Ⓞ ANTI-LEVER SYSTEM



MOD. LO5





**DEKTON AURA15**  
 Colour: RAL 9005  
 Accessory: MA 13

## OPENING SYSTEMS

### FINGERPRINT SCANNER

- Up to 20 users
- Light ring to signal system feedback and operating modes
- Installed in the door leaf
- Available in stainless steel gray or black
- Freedom to leave the house and open the door without having to carry the key, smartphone, card, etc.
- Highest security: only authorised persons can unlock the door
- Highest level of counterfeit protection
- Recognizes the growth of children's fingers and changes in user habits as well as minor injuries
- Temporary access authorizations possible
- Access log shows all activities of the last 30 days
- Possibility of unlocking the door, via smartphone, from anywhere
- Message to the smartphone when opening the door
- Connection with the Alexa virtual assistant from Amazon



### OPENING BY CODE OR BLUETOOTH

- Option to open by code on your touch screen
- Option to open from the mobile phone via Bluetooth (with touch confirmation on optional keyboard)
- The door unlocks and opens automatically
- In case of an obstacle detection, the door stops
- Once closed, the lock is automatically locked
- Control of functions through a mobile application compatible with iOS and Android (lighting, tone, temporary user blocking ...)



### MOTORIZED OPENING

- Hinged door system with easy access
- It allows to open and close doors automatically
- Activated by push button, remote control or acoustic signals
- Barrier-free system, ideal for people with reduced mobility (slow speed mode)
- Stops and reverses if an obstacle is encountered
- The mechanism is invisible when the door is closed, once it is integrated into the frame
- Manual, automatic or pushing option
- Maximum door width: 1,100 mm
- Maximum door weight: 125 kg



## KNOBS



PM 1\_Satin steel  
Ø80 mm



PM 1\_Black



PM 10\_Satin steel  
100x400 mm



PM 11\_Satin steel  
100x200 mm



PM 14\_Satin steel  
70x70 mm



PM 17 - Black  
- White  
- Nickel  
- Slate stone

● ● ● ● Consult other finishes

## KEYHOLES



BOC 1\_Satin steel  
Ø50 mm



BOC 1\_Black



BOC 2\_Satin steel



BOC 6\_Satin steel  
50x50 mm



BOC 7\_Satin steel  
50x30 mm



BOC 10\_Satin steel

● ● ● ● Consult other finishes

LEVER HANDLES



SQ 9\_Satin steel



SQ 10\_Satin steel



SQ 10\_Black



SP 1\_Bright chrome



SP 2\_Satin chrome



SP 3\_Bright chrome / Wenge



SP 4\_Bright chrome



SP 5\_Copper



SP 6\_Bronze



SP 7\_Anthracite



SP 9\_Bright chrome / Brown leather

BAR HANDLES



500 mm  
700 mm  
1200 mm  
1800 mm

An=30 mm

MA 4\_Steel



500 mm  
700 mm  
1200 mm  
1800 mm

O19 mm

MA 5\_Steel



500 mm  
700 mm  
1200 mm  
1800 mm

O30 mm

MA 8\_Steel



500 mm  
700 mm  
1200 mm  
1800 mm

O30 mm

MA 10\_Steel



330 mm  
680 mm  
1030 mm  
1630 mm

O30 mm

MA 11\_Steel



500 mm  
700 mm  
1200 mm  
1800 mm

An=40 mm

MA 13\_Steel



MA 18\_Steel  
300x150 mm



CASIOPEA\_Steel  
1625x75 mm

● ● ● ● Consult other finishes

IN No outdoor treatment

\* Available in satin and bright steel ● ● ● ● Consult other finishes

## HINGES



### TWO-LEAF HINGES

- Supported leaf weight: up to 100 kg (with 3 hinges)
- Consult options for more weight



### THREE-LEAF HINGES

- Indicated use for doors with a height greater than 3 m
- Supported leaf weight: up to 130 kg (depending on height)
- Consult options for more weight



### HIDDEN HINGE

- Best highlighting of the door design
- Adjustable in 6 directions
- Maximum opening angle 105°
- High security level
- Maintenance-free
- Includes thermal break
- Supported leaf weight: up to 180 kg
- Consult options for more weight

## CYLINDER LOCKS AND SECURITY SYSTEMS



### STANDARD SAFETY CYLINDER

- Double profile
- Flat nickel-plated brass key with 6 pistons
- Anti-drill bar in the cylinder body
- 30° DIN cam
- Property card
- Standard security level

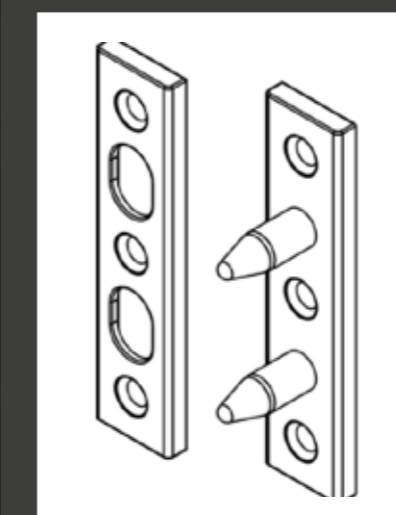
### HIGH SAFETY CYLINDER

- Double nickel-plated European profile
- Double function (opening with key inserted)
- Encryption with 14 pistons
- Reversible nickel silver key
- Registered and protected key profile
- Bumping resistant
- Drill protection on body and rotor
- Stainless steel encryption pistons
- Anti-extraction bar
- 30° DIN cam
- Property card



### HIDDEN ANTI-LEVER SYSTEM

- Anti-lever safety lock with double reinforcement hinge



### THUMBTURN

- This cylinder protects against unwelcome visitors, with a 11 pin reversible key system, it has been designed to withstand tampering techniques such as bumping, picking and drilling. Furthermore, it's equipped with a special anti-snapping bar in harmonic steel, designed to increase resistance to breakage or extraction.



## AUTOMATIC LOCKS



## ACCESSORIES



### ELECTRONIC SPYHOLE

- 3.2 inch digital spyhole
- Good visibility even in low light conditions
- 105° viewing angle
- Easy installation and handling
- For panels from 24 to 100 mm thick
- Battery: 2x AAA batteries



### DIGITAL WIRELESS SPYHOLE

- Control and visualization through mobile application
- 2 inch screen
- 105° viewing angle
- Photo and video mode
- Easy installation and handling
- For panels from 38 to 100 mm thick
- Rechargeable lithium battery



### ENTRY PHONE

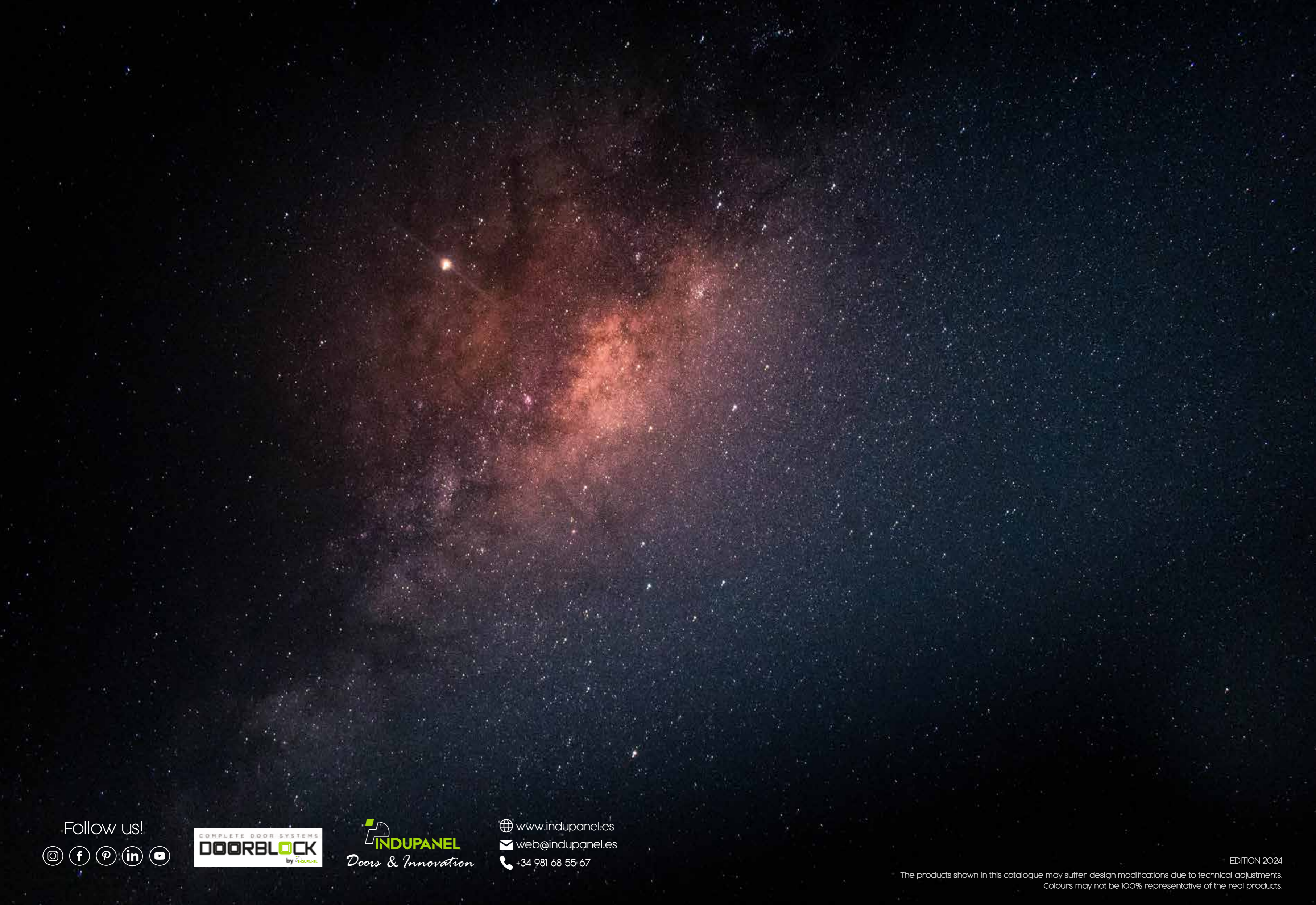
Allows a temporary activation of the door, with simple one-handed operation or motorized unlocking



### HIDDEN DOOR CLOSER

- Integrated door closers are fully housed inside the door leaf. The sliding guide is only visible when the door is opened. The strength and speed of closing, the hydraulic final stroke and the hydraulic damping on the opening can be conveniently adjusted during the installation.

Maximum weight: 130 kg  
Maximum length: 1.100 m  
Maximum opening: 120°



Follow us!



 [www.indupanel.es](http://www.indupanel.es)  
 [web@indupanel.es](mailto:web@indupanel.es)  
 +34 981 68 55 67

EDITION 2024

The products shown in this catalogue may suffer design modifications due to technical adjustments.  
Colours may not be 100% representative of the real products.

Polígono Industrial O Acevedo  
15185 Cerceda, A Coruña (Spain)  
+34 981 685 567

[www.indupanel.es](http://www.indupanel.es)

